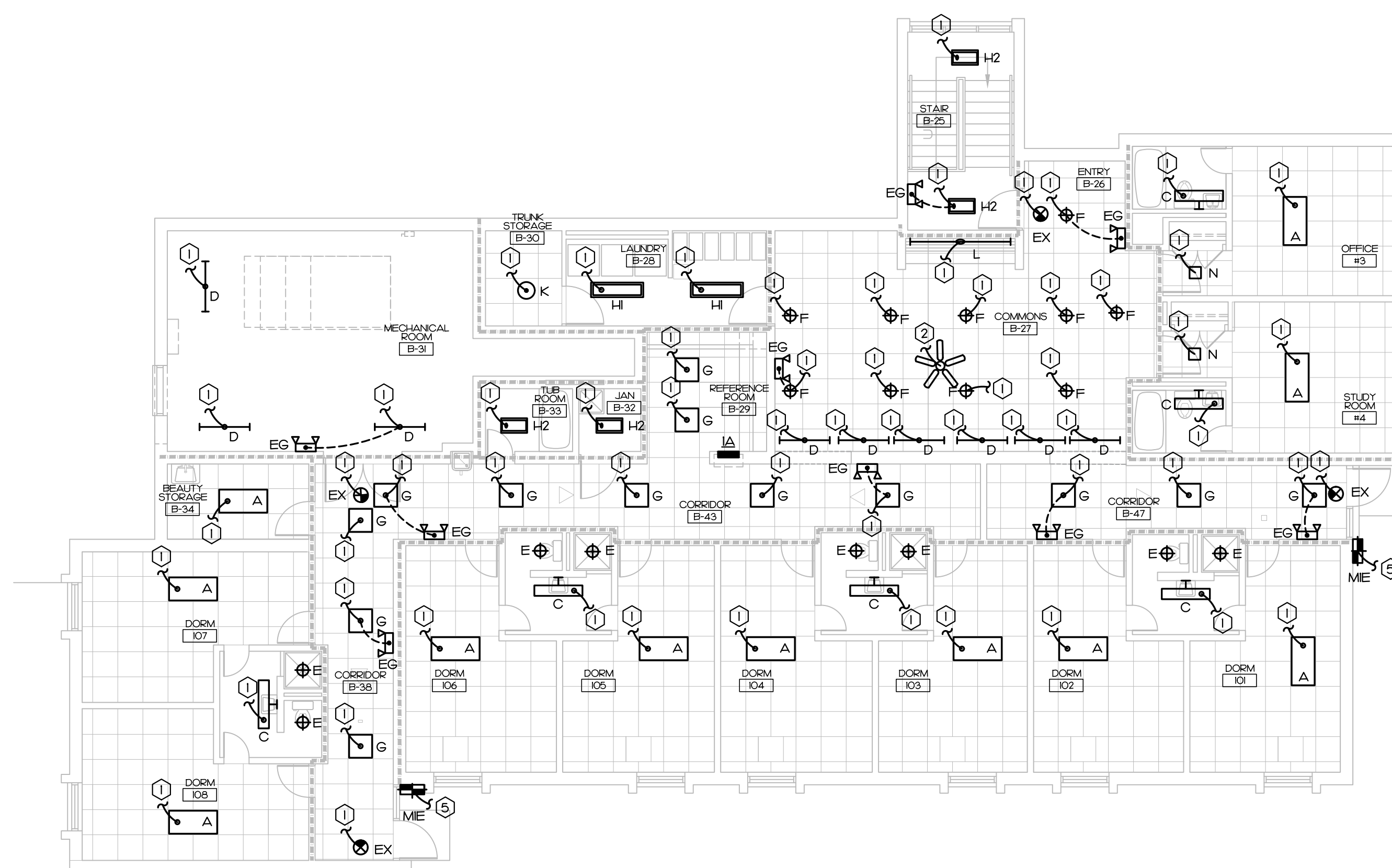
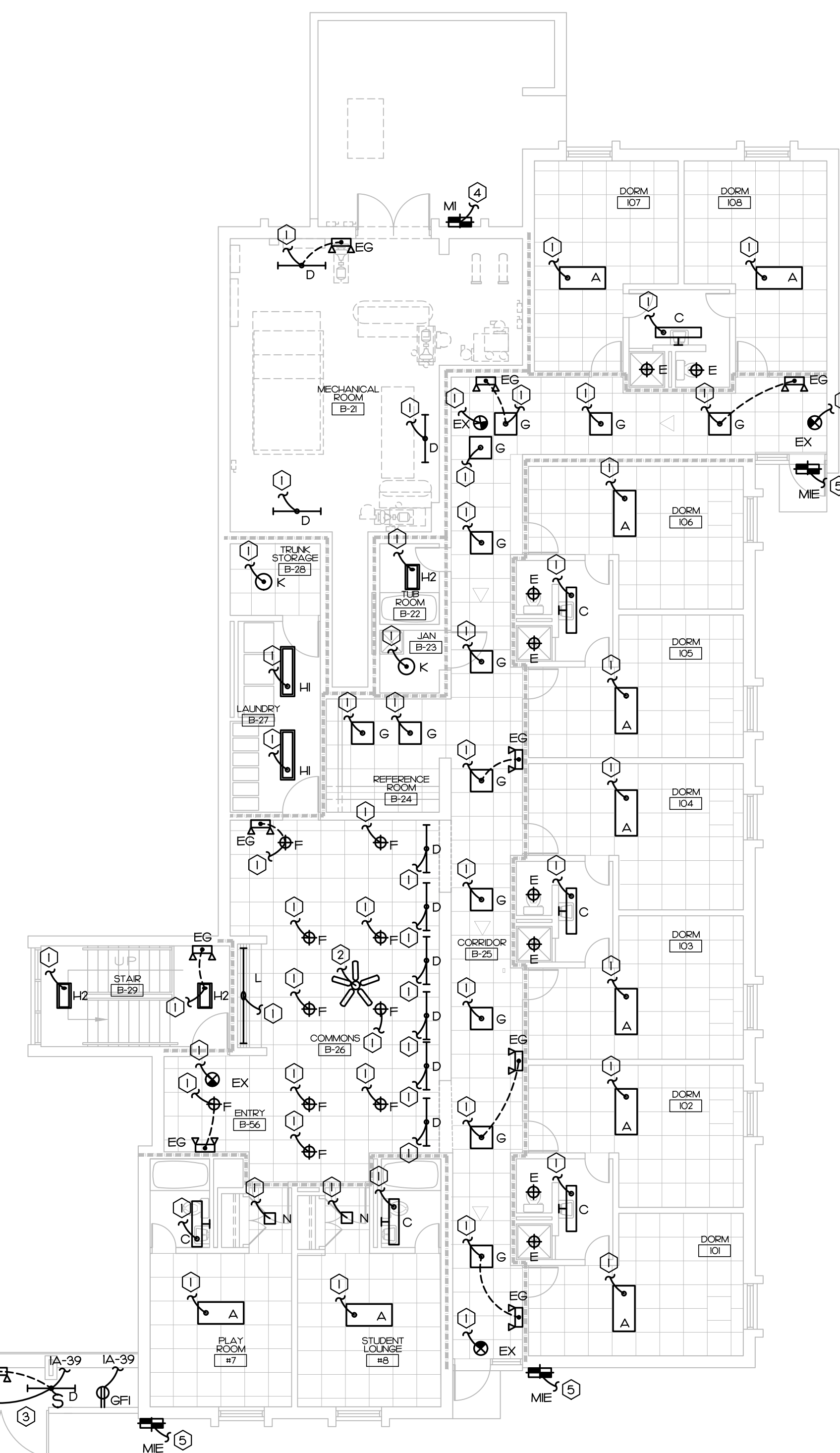


- ① CONNECT NEW FIXTURE TO EXISTING LIGHTING AND SWITCHING CIRCUIT IN THIS AREA AVAILABLE FROM DEMOLITION
- ② EXISTING FAN TO BE REINSTALLED IN EXISTING LOCATION AFTER DEMOLITION. CONNECT TO EXISTING POWER AND SWITCHING CIRCUITS
- ③ NEW LIGHTS, SWITCH, AND POWER CONNECTIONS FOR UNIT HEATER. THESE WILL BE CONNECTED TO NEW CIRCUITS IN AN EXISTING PANEL.
- ④ FIXTURE TO BE CONNECTED TO EXISTING EXTERIOR LIGHTING CIRCUIT. CONNECT INTEGRAL PHOTOCELL CONTROL AHEAD OF NORMAL POWER
- ⑤ FIXTURE TO BE CONNECTED TO EXISTING EXTERIOR LIGHTING CIRCUIT. CONNECT BATTERY BACKUP CONTROL AHEAD OF INTEGRAL PHOTOCELL CONTROL

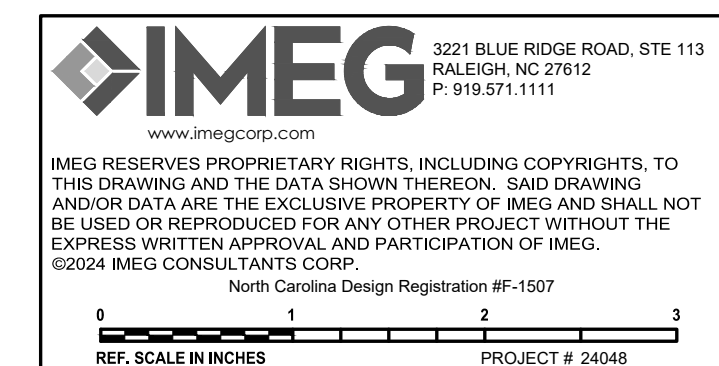
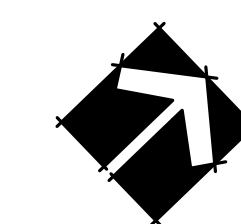
I. THE CEILING AREA IN THE HALLWAY AND COMMON SPACES OPEN TO THE HALLWAY WILL BE 4-HOUR RATED. TENTING AND PROTECTION OF THE LIGHT FIXTURES IN THESE AREAS WILL BE THE RESPONSIBILITY OF THE GENERAL CONTRACTOR.



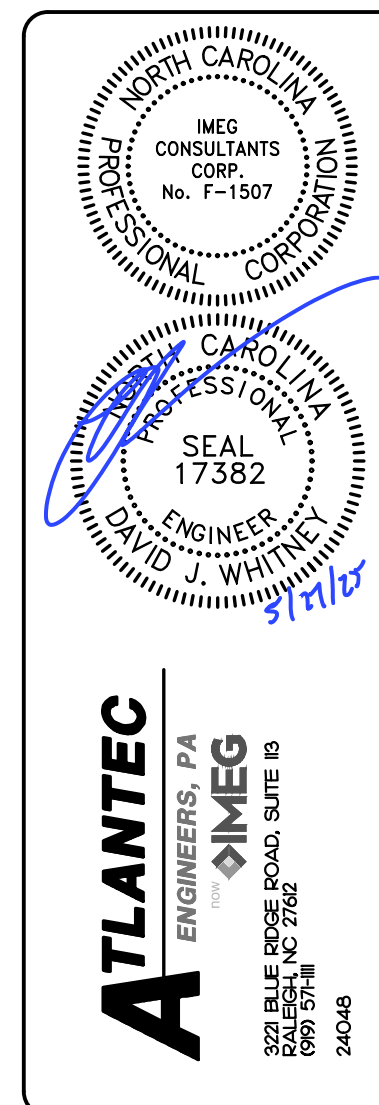
SCALE: 1/8" = 1'-0"



SCALE: 1/8" = 1'-0"



REVISIONS		
	FOR CONSTRUCTION	5/27/25



PREPARED FOR:  
NC DEPARTMENT  
OF INSTRUCTION  
SCO #  
24-27792-01A

GOVERNOR MOREHEAD SCHOOL  
SPRINKLER, ADA TOILET, LIGHTING  
UPGRADES FOR DORMS A, B, + D  
RALEIGH, NC

CONTENTS:  
BUILDING A,B FIRST  
FLOOR ELECTRICAL  
PLAN

DATE:  
**May 27, 2025**

DESIGNER: **SWM**  
ENGINEER: **DJW**

SHEET NO.

# E-101

OF